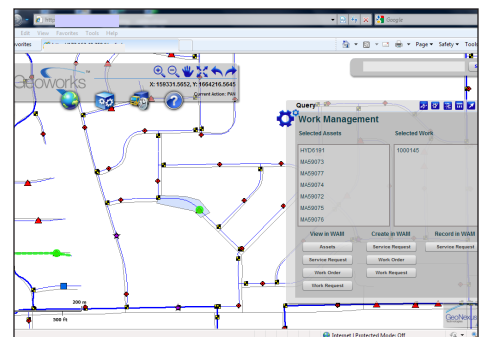




# Geoworks

Geoworks™ provides real business benefits by seamlessly integrating Oracle® Work and Asset Management (WAM) and ESRI® ArcGIS®

- Reduce time searching through an extensive asset hierarchy by using the map to easily locate and select the asset of interest.
- Avoid creating duplicate work orders by visualizing existing work on the map.
- Increase productivity by using the map to group work orders based on proximity and optimize work order routes.
- Provide better service by using the map to locate an incident and dispatch the closest crew.
- Optimize work planning and scheduling by visualizing work order backlog on the map.
- Increase accuracy of maintenance history by using the map to select the correct assets when creating work orders.



**Visual Perspective. Optimal Results. [www.geo-nexus.com](http://www.geo-nexus.com)**



Geoworks View™ is an enterprise web-based GIS viewer based on ESRI® ArcGIS Server and Adobe® FLEX™, that provides map visualization, spatial query, and geoprocessing capabilities through an easy to use interface.



Geoworks View Plus™ provides all of the map visualization, spatial query, and geoprocessing functions in Geoworks View, plus a connection to Oracle WAM software for advanced work and asset management capabilities.



Geoworks Sync™ is a set of services that can be configured to support synchronization between the EAM database and the ESRI Geodatabase. This ensures the GIS and Oracle WAM databases are synchronized providing a single consistent asset inventory.



Geoworks Monitor™ is a complete enterprise performance monitoring and alerting solution for ESRI ArcGIS. Geoworks Monitor can be configured to monitor the status of GIS services, including all Geoworks modules, and automatically notifies the system administrator through various alerts such as text messages, emails, and enterprise dashboard alarms, if trouble occurs. Geoworks Monitor is a comprehensive tool to improve overall IT efficiency and productivity ensuring enterprise systems are up and running to support the business.

### ***Solutions for Successful GIS and EAM Integration***

#### **Corporate Headquarters**

3135 South State Street, Suite 350 Ann Arbor, Mi 48108

Tel: 734-660-4565 Email: [info@geo-nexus.com](mailto:info@geo-nexus.com) Web: [www.geo-nexus.com](http://www.geo-nexus.com)



ESRI  
Technology  
AUTHORIZED  
BUSINESS PARTNER

ORACLE PARTNER